

2017 LUBRICATION SYSTEMS

PRELIMINARY



WE MEASURE OUR SUCCESS BY YOUR UP-TIME

SINCE 1927

HAMAX SYSTEM 2 BREAKER PUMP



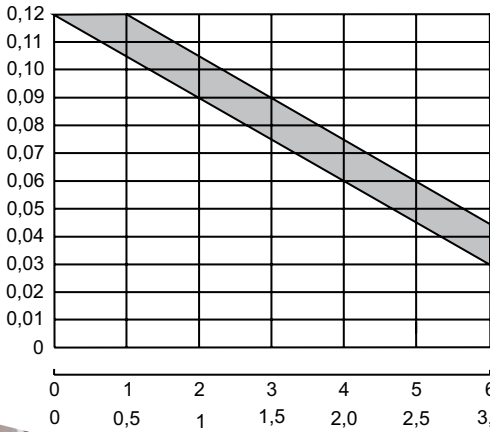
KEY FEATURES

- Tool-mounted, hydraulically actuated grease pump
- Continuous, automatic lubrication protects against chisel wear
- Recommended for copper-based chisel pastes
- Adjustable output rates to suit equipment and application

DELIVERY RATE DIAGRAM

PE-120FVH

Delivery rate (cm³)



TECHNICAL DATA

HYDRAULIC MOTOR

Supply: Hydraulic hammer circuit, 1,305 – 3,626 psi (90-250 bar)

Difference pressure in operation: min. 1,015 psi (70 bar)

Admissible return pressure: max. 290 psi (20 bar)

Displacement: max. 0.53 gal/min. (2 l/min.)

Default speed of the eccentric with oil ISO VG 46 at 68°F (20°C): 14 rpm at 0.48 gal/min. (1.8 l/min.)

Hydraulic oil: ISO VG 46-100

Temperature range: -4°F up to 158°F (-20°C up to +70°C)

Speed can be adjusted with throttle

PUMPING ELEMENTS

Pressure limiting valve: 4,061 psi (280 bar)

Delivery rate/ stroke PE120FH: 0.12 cm³

Delivery rate regulation: sixfold notches per 1/2 revolution

Reduction: 0.013 cm³ per notch

Default stroke number: 14 strokes/min.

Stroke number can be adjusted with throttle

In case of minor lubricant requirements a pump element with adjustable delivery rate is optionally available.

GENERAL

Lubricant: EP2 grease or Cu paste

Grease supply: different types of cartridges

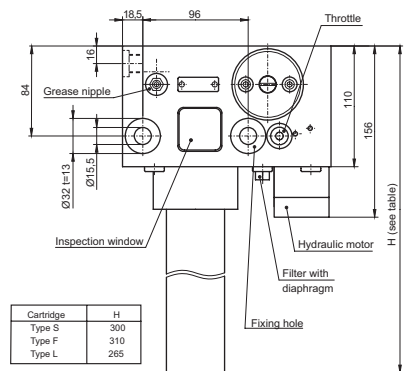
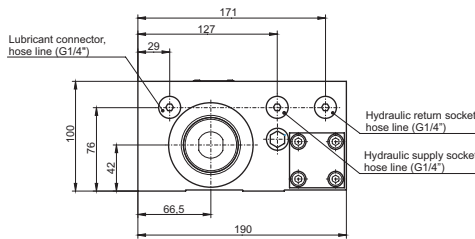
Type of cartridge: dependant of cartridge sleeve

Weight: approx. 14.7 lb. (6.7 kg)

Grease nipple for manual greasing available

Four different lubricant outlets possible

TECHNICAL DRAWINGS



HAMAX 2 COMPACT BREAKER PUMP



KEY FEATURES

- Easily connects to hydraulic unit of carrier system
- Adjustable output rates to match equipment and application
- Driven by a hydraulic motor ensures continuous supply of lubricant

TECHNICAL DATA

HYDRAULIC MOTOR

Supply: Hydraulic hammer circuit, 1,305-3,625 psi (90-250 bar)

Pressure in operation: min. 1,015 psi (70 bar)

Admissible return pressure: max. 290 psi (20 bar)

Displacement: max. 0.53 gal/min. (2 l/min)

Default speed of the eccentric gear 14 rpm - with oil ISO VG 46 at 68°F (20°C): at 0.48 gal/min. (1.8 l/min.)

Temperature range: 32°F to 158°F (0°C to +70°C)

Speed can be adjusted with throttle

PUMPING ELEMENT

Delivery rate/stroke: 0.12 cm³

Default stroke: 14 strokes/min.

Stroke number can be adjusted with throttle

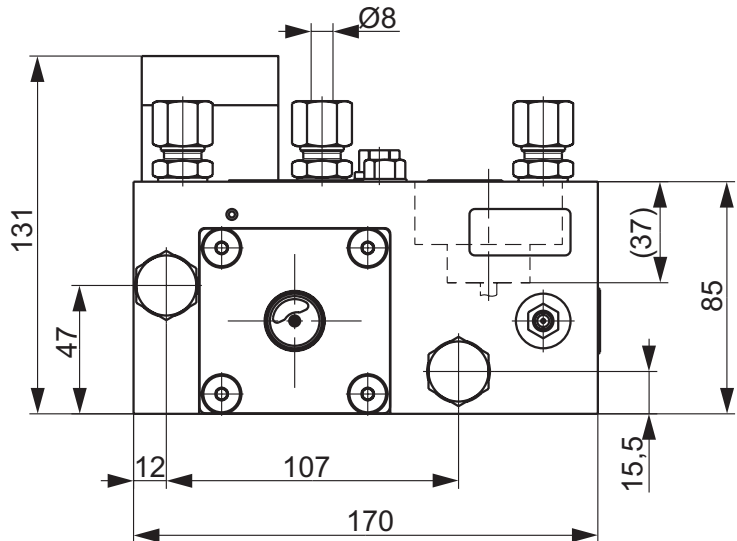
GENERAL

Weight: approx. 8.6 lb. (3.9 kg)

Lubricant container: Cartridge

Lubricant: EP-grease without solid contents or chisel pastes

TECHNICAL DRAWINGS



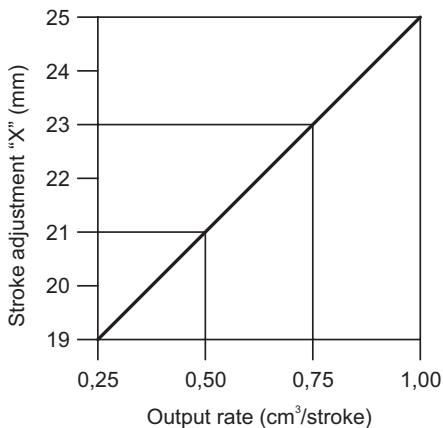
GREASE LUBRICATION PUMPS

HAMAX 11 BREAKER PUMP



KEY FEATURES

- Tool-mounted, hydraulically actuated grease pump
- Delivers lubricant dose with each stroke of the hammer
- Recommended for copper-based chisel pastes
- Adjustable output rates to suit equipment and application



TECHNICAL DATA

HYDRAULIC MOTOR

Drive: hydraulic

No. of strokes: 1 stroke per pulse at hydraulic connection

Operating pressure: min. 1,740 psi (120 bar) - max. 4,351 psi (300 bar)

Counter press. of lube point: max. 1,088 psi (75 bar)

Relief pressure: max. 363 psi (25 bar)

Reservoir capacity: 100, 200 or 400 cm³

Lubricant: greases up to NLGI-cl. 2

Output rate: 0 or 0.25 to 1 cm³/stroke

Output rate regulation: continuously (regulation distance 6 mm)

Operating temperature: -13 °F to 167 °F (-25°C to +75°C) (with suitable grease)

Weight (without lubricant storage):

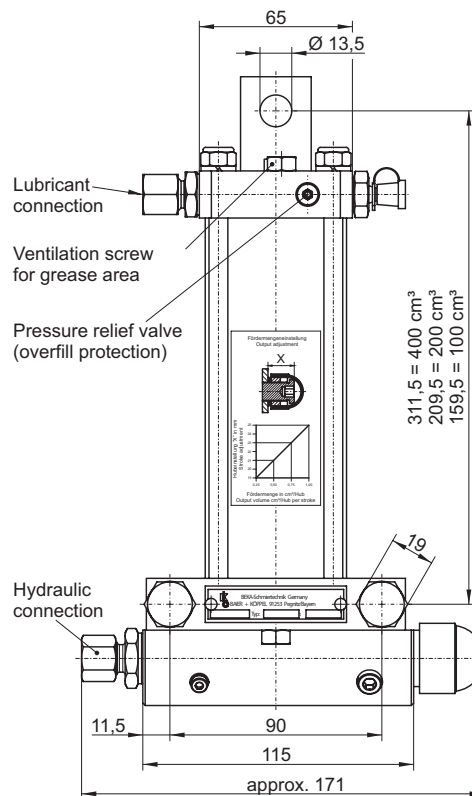
at reservoir capacity 100 cm³: 9.9 lb. (4.5 kg)

at reservoir capacity 200 cm³: 10.8 lb. (4.9 kg)

at reservoir capacity 400 cm³: 12.6 lb. (5.7 kg)

Filling with grease: Connection to the hydraulic system necessary

TECHNICAL DRAWINGS



GREASE LUBRICATION PUMPS

HPG 2 BREAKER PUMP



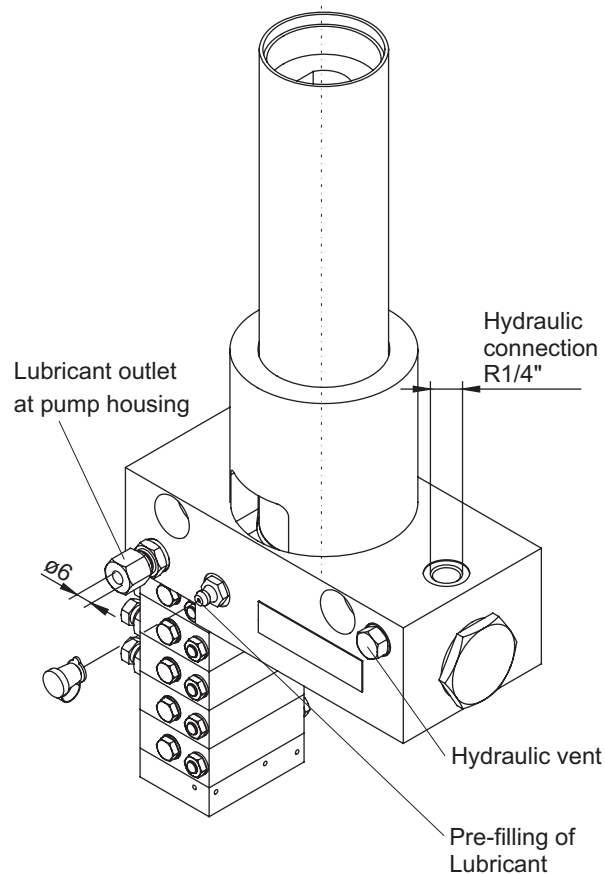
TECHNICAL DATA

Drive type: hydraulic
Min. actuation pressure: 1,015 psi (70 bar)
Max. actuation pressure: 5,801 psi (400 bar)
Max. residual pressure hydraulic system: 290 psi (20 bar)
Number of outlets: depends on distributor at pump housing
Dosage volume: depends on distributor
Output rate pump: 270 mm³/per pulse
Output rate regulation: MX-2 progressive distributor
Number of strokes: 1 stroke per pulse at the hydraulic connection
Grease cartridge capacity: 400 cm³
Temperature range (depending on lubricant and hydraulic inlet pressure): 14°F to 122°F (-10°C to +50°C)
Installation position: grease cartridge vertically upwards

TECHNICAL DRAWINGS

KEY FEATURES

- A sturdy, compact grease pump designed for use with progressive centralized lubrication systems
- Designed to deliver multi-purpose grease NLG1 and 2
- Equipped with an MX-2 type progressive distributor
- Provides 270 mm³/stroke to the progressive MX-2 progressive distributor





1231 Collier Road NW, Suite E
Atlanta, GA 30318

PO 234, 258 Sonwil Drive
Buffalo, NY 14225

9 - 2830 Argentia Road
Mississauga, ON L5N 8G4

1.888.862.7461 | sales@beka-lube.com | www.beka-lube.com